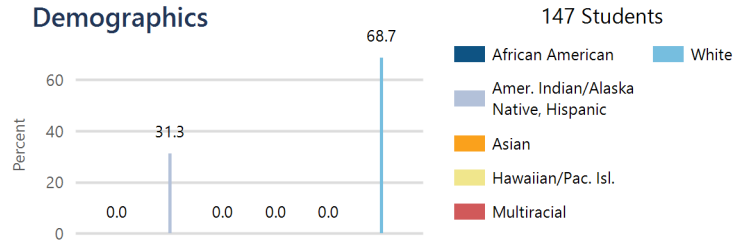




Cheylin USD 103

605 Bird Ave., Bird City, KS 67731-0028
 (785) 734-2341
<https://www.cheylin.com/>

System Accreditation Status: **Accredited**
 ESSA Annual Meaningful Differentiation: **Meeting**
 Grades: **PK-12**
 Superintendent: **Sherri Edmundson**

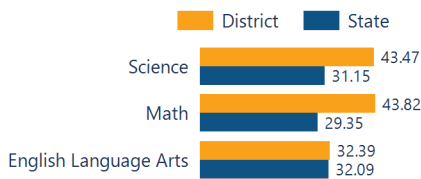


District Kansans Can Star Recognition

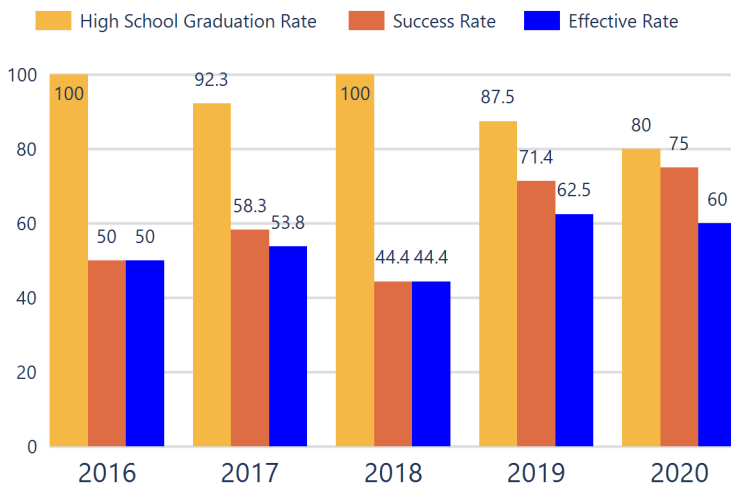
	Gold	Silver	Bronze	Copper
Social-Emotional Growth				
Kindergarten Readiness				
Individual Plan of Study				
Academically Prepared for Postsecondary				★
Civic Engagement				
High School Graduation				
Postsecondary Success				★

Academically Prepared for Postsecondary Success

The percentage of students who scored at Levels 3 and 4 on the state assessment.



District Postsecondary Effectiveness



Kansans CAN lead the world!
 Graduation **95%**
 Effective Rate 70-75%

Five-Year Graduation Avg **93.6%**

Five-Year Success Avg **56.8%**

Five-Year Effective Avg **53.2%**

95% Confidence Interval for the Predicted Effectiveness Rate **44.2 - 47.3%**

The numerator and denominator in the Five-Year Averages contain total student counts over five years (2016-2020) and are rounded to the nearest whole number.

- Graduation Rate:** The 4-year adjusted cohort graduation rate is the number of students who graduate in four years with a regular high school diploma divided by the number of students who entered high school as 9th graders four years earlier (adjusting for transfers in and out).
- Success Rate:** A student must meet one of the four following outcomes within two years of High School graduation.
 - Student earned an Industry Recognized Certification while in High School.
 - Student earned a Postsecondary Certificate.
 - Student earned a Postsecondary Degree.
 - Student enrolled in Postsecondary in both the first and second year following High School graduation.
- Effective Rate:** The calculated Graduation Rate multiplied by the calculated Success Rate.

GRADUATION RATE

The four-year adjusted cohort graduation rate is the percentage of students in a cohort, adjusted for transfers into and out of the school, district, or state, who graduate with a regular high school diploma within four years of entering high school.

100.0%

State: 89.3

District ESSA Operating Expenditures Per Pupil

Expenditures reflect those for the normal day-to-day operation of schools as reported by the Local Education Agency. The following expenditures are excluded: capital outlay, school construction and building improvements, equipment and debt services.

\$17,142

ATTENDANCE RATE

Rate at which students are present at school, not including excused or unexcused absences.

89.1%

State: 92.1

CHRONIC ABSENTEEISM

Percentage of students who miss 10% or more of school days per year either with or without a valid excuse.

38.7%

State: 25.4

[Click here for State Financial Accountability.](#)

DROPOUT RATE

The dropout rate is calculated annually and reflects the number of seventh–twelfth grade students who drop out in any one school year. A dropout is any student who exits school between October 1 and September 30 with a dropout EXIT code AND does not re-enroll in school by September 30.

N/A

State: 1.4



District Academic Success

State Assessment scores are displayed by student subgroup over three years time in three subjects: Math, English Language Arts (ELA), and Science. Assessment scores are not available for the 2020 school year.

ALL STUDENTS

	2019-20			2020-21			2021-22		
	Math	ELA	Sci	Math	ELA	Sci	Math	ELA	Sci
Level 1	N/A	N/A	N/A	17.14	17.64	17.24	16.43	26.76	17.39
Level 2	N/A	N/A	N/A	47.14	41.17	24.13	39.72	40.84	39.13
Level 3	N/A	N/A	N/A	27.14	32.35	51.72	38.35	25.35	26.08
Level 4	N/A	N/A	N/A	8.57	8.82	6.89	5.47	7.04	17.39

FREE AND REDUCED LUNCH STUDENTS

	2019-20			2020-21			2021-22		
	Math	ELA	Sci	Math	ELA	Sci	Math	ELA	Sci
Level 1	N/A	N/A	N/A	16.66	17.14	30.76	24.39	30.76	25.00
Level 2	N/A	N/A	N/A	63.88	45.71	15.38	43.90	46.15	43.75
Level 3	N/A	N/A	N/A	16.66	34.28	53.84	29.26	20.51	25.00
Level 4	N/A	N/A	N/A	2.77	2.85	0.00	2.43	2.56	6.25

STUDENTS WITH DISABILITIES

	2019-20			2020-21			2021-22		
	Math	ELA	Sci	Math	ELA	Sci	Math	ELA	Sci
Level 1	N/A	N/A	N/A	N/A	N/A	N/A	N/A	N/A	N/A
Level 2	N/A	N/A	N/A	N/A	N/A	N/A	N/A	N/A	N/A
Level 3	N/A	N/A	N/A	N/A	N/A	N/A	N/A	N/A	N/A
Level 4	N/A	N/A	N/A	N/A	N/A	N/A	N/A	N/A	N/A

AFRICAN-AMERICAN STUDENTS

	2019-20			2020-21			2021-22		
	Math	ELA	Sci	Math	ELA	Sci	Math	ELA	Sci
Level 1	N/A	N/A	N/A	N/A	N/A	N/A	N/A	N/A	N/A
Level 2	N/A	N/A	N/A	N/A	N/A	N/A	N/A	N/A	N/A
Level 3	N/A	N/A	N/A	N/A	N/A	N/A	N/A	N/A	N/A
Level 4	N/A	N/A	N/A	N/A	N/A	N/A	N/A	N/A	N/A

HISPANIC STUDENTS

	2019-20			2020-21			2021-22		
	Math	ELA	Sci	Math	ELA	Sci	Math	ELA	Sci
Level 1	N/A	N/A	N/A	25.00	29.16	N/A	22.22	28.00	N/A
Level 2	N/A	N/A	N/A	58.33	37.50	N/A	37.03	44.00	N/A
Level 3	N/A	N/A	N/A	16.66	33.33	N/A	37.03	24.00	N/A
Level 4	N/A	N/A	N/A	0.00	0.00	N/A	3.70	4.00	N/A

N/A: To protect student privacy, when a subgroup has fewer than 10 students, the data are not displayed.

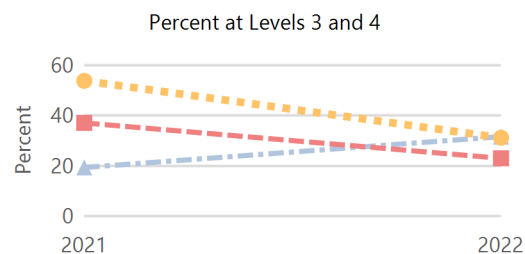
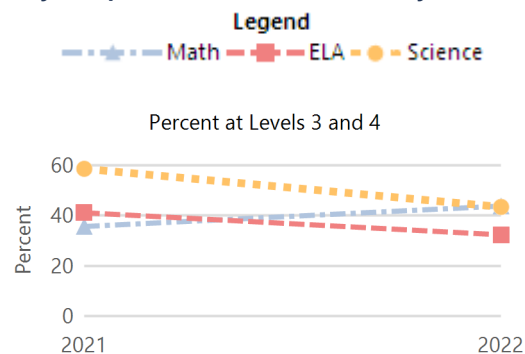
ACT Performance (2022 School Year)

ACT is a national college admissions exam that includes subject level tests in English, Math, Reading and Science. Students receive scores that range from 1 to 36 on each subject and an overall Composite score. This report provides the average Composite score for the 2022 graduating seniors who took the ACT as sophomores, juniors, or seniors.

Note: Not all eligible students completed an ACT.

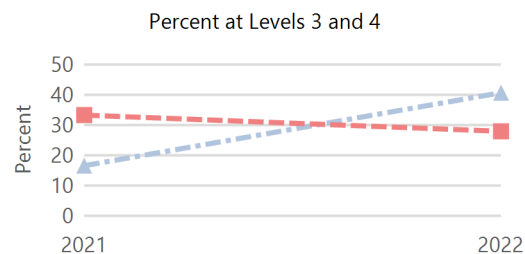


Academically Prepared for Postsecondary Success



Percent at Levels 3 and 4
 *To protect student privacy, when a subgroup has fewer than 10 students the data are not displayed. Assessment scores are not available for the 2020 school year.

Percent at Levels 3 and 4
 *To protect student privacy, when a subgroup has fewer than 10 students the data are not displayed. Assessment scores are not available for the 2020 school year.



District	15.7
State	19.8